



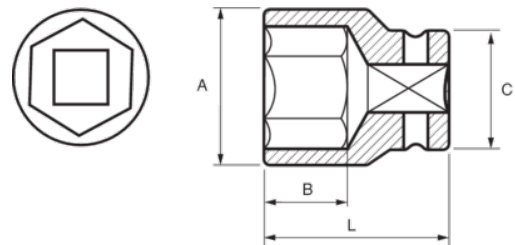
121-08-1/121-36-1

Vaso hexagonal de 1/2"





DETALLES DEL PRODUCTO

- Vasos de 1/2", hexagonales, dimensiones en mm.
- Aleación de acero al cromo vanadio.
- Acabado cromado brillante.
- Perfil NPP con forma ondulada.
- Normas: DIN3120 y DIN3124.



ATRIBUTOS DE PRODUCTO

Producto		A	B	C	L	
121-08-1	8 mm	14.8 mm	13 mm	22 mm	38 mm	50 g
121-09-1	9 mm	15.3 mm	13 mm	22 mm	38 mm	48 g
121-10-1	10 mm	15.3 mm	13 mm	22 mm	38 mm	49 g
121-11-1	11 mm	16.5 mm	13 mm	22 mm	38 mm	50 g
121-12-1	12 mm	17.8 mm	13 mm	22 mm	38 mm	52 g
121-13-1	13 mm	19 mm	13 mm	22 mm	38 mm	54 g
121-14-1	14 mm	20.3 mm	13 mm	22 mm	38 mm	56 g
121-15-1	15 mm	22 mm	17.8 mm	20.5 mm	38 mm	57 g
121-16-1	16 mm	22 mm	17.8 mm	20.5 mm	38 mm	71 g
121-17-1	17 mm	24 mm	17.8 mm	21.9 mm	38 mm	72 g
121-18-1	18 mm	25 mm	17.8 mm	22.9 mm	38 mm	90 g
121-19-1	19 mm	26 mm	17.8 mm	22.9 mm	38 mm	84 g
121-20-1	20 mm	28 mm	17.8 mm	23.9 mm	38 mm	87 g
121-21-1	21 mm	28 mm	17.8 mm	23.9 mm	38 mm	95 g
121-22-1	22 mm	30 mm	17.8 mm	26.1 mm	38 mm	97 g
121-23-1	23 mm	32 mm	17.8 mm	28.1 mm	38 mm	103 g
121-24-1	24 mm	32 mm	17.8 mm	28.1 mm	38 mm	109 g
121-25-1	25 mm	34 mm	17.8 mm	29.1 mm	40 mm	146 g
121-26-1	26 mm	34 mm	17.8 mm	29.1 mm	42 mm	192 g
121-27-1	27 mm	36 mm	17.8 mm	30.1 mm	42 mm	211 g
121-28-1	28 mm	38 mm	17.8 mm	32.1 mm	42 mm	212 g
121-30-1	30 mm	40 mm	17.8 mm	34.1 mm	44 mm	214 g
121-32-1	32 mm	42 mm	17.8 mm	36.1 mm	44 mm	217 g
121-34-1	34 mm	50 mm	18 mm	38 mm	44 mm	260 g
121-36-1	36 mm	52 mm	18.2 mm	40 mm	45 mm	300 g