



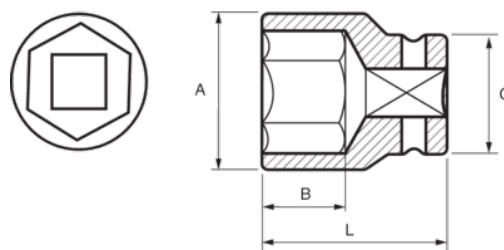
167-08-1/167-41-1

Vasos de impacto hexagonales de 1/2", mm





## DETALLES DEL PRODUCTO

- Vasos de impacto de 1/2".
- Aleación de acero de cromo molibdeno de alto rendimiento.
- Acabado fosfatado.
- Para usar con máquinas.
- Para usar con muelle de seguridad.
- Perfil Dynamic-Drive para proteger las tuercas.
- Normas: UNE16507, DIN 3129 e ISO 2725.



## ATRIBUTOS DE PRODUCTO

Producto		<b>A</b>	<b>B</b>	<b>C</b>	<b>L</b>	
<b>167-08-1</b>	8 mm	15 mm	15 mm	25 mm	38 mm	84 g
<b>167-10-1</b>	10 mm	17.5 mm	15 mm	25 mm	38 mm	89 g
<b>167-12-1</b>	12 mm	19 mm	15 mm	25 mm	38 mm	94 g
<b>167-13-1</b>	13 mm	20 mm	15 mm	25 mm	38 mm	94 g
<b>167-14-1</b>	14 mm	22 mm	15 mm	25 mm	38 mm	94 g
<b>167-15-1</b>	15 mm	23 mm	25 mm	25 mm	38 mm	134 g
<b>167-16-1</b>	16 mm	24 mm	15 mm	25 mm	38 mm	134 g
<b>167-17-1</b>	17 mm	26 mm	15 mm	30 mm	38 mm	134 g
<b>167-18-1</b>	18 mm	27 mm	15 mm	30 mm	38 mm	134 g
<b>167-19-1</b>	19 mm	28 mm	17.5 mm	30 mm	38 mm	134 g
<b>167-20-1</b>	20 mm	29 mm	17.5 mm	30 mm	38 mm	137 g
<b>167-21-1</b>	21 mm	30 mm	17.5 mm	30 mm	38 mm	149 g
<b>167-22-1</b>	22 mm	32 mm	17.5 mm	30 mm	38 mm	149 g
<b>167-23-1</b>	23 mm	34 mm	18 mm	30 mm	40 mm	149 g
<b>167-24-1</b>	24 mm	34 mm	18 mm	30 mm	40 mm	179 g
<b>167-26-1</b>	26 mm	36 mm	22 mm	30 mm	42 mm	189 g
<b>167-27-1</b>	27 mm	38 mm	22 mm	30 mm	42 mm	204 g
<b>167-30-1</b>	30 mm	42 mm	22 mm	30 mm	44 mm	234 g
<b>167-32-1</b>	32 mm	42 mm	22 mm	40 mm	44 mm	282 g
<b>167-34-1</b>	34 mm	46 mm	22 mm	40 mm	48 mm	406 g
<b>167-36-1</b>	36 mm	48 mm	22 mm	40 mm	48 mm	467 g
<b>167-38-1</b>	38 mm	50 mm	23 mm	40 mm	48 mm	480 g
<b>167-41-1</b>	41 mm	56 mm	24 mm	45 mm	48 mm	495 g